



# iShop Instruction Manual



Version 1.0 - April 2020



# Intro Screen

Tutorial (Coming Soon): Go here for a short video of a person using the app at a grocery store.

Your Wallet (pg. 3): Go here to start using the app!

Administrator Settings (pg. 7): Go here to adjust the tax that is applied to every purchase, or to also include a tip in each purchase.

User Tutorial 




Tutorial

To Your Wallet 



Start !

To Administrator  
Settings 



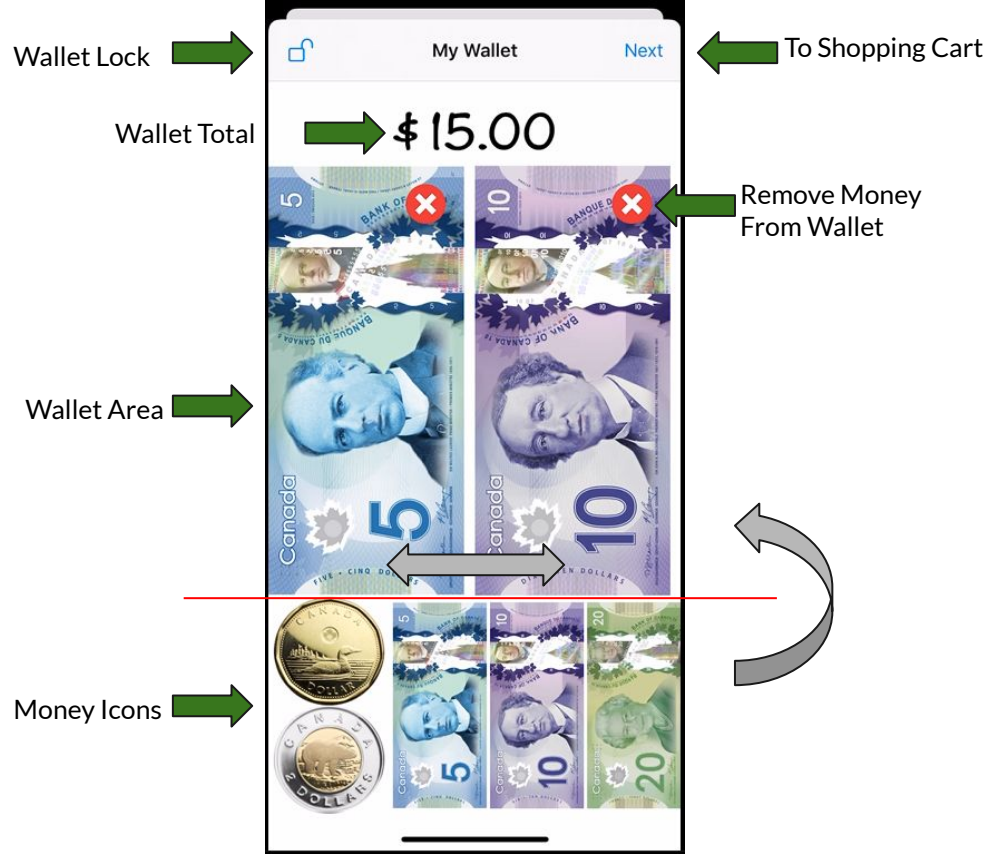
# Your Wallet

Here, you total the money from your wallet by declaring each bill and coin you have.

iShop only counts \$1, \$2, \$5, \$10, and \$20 coins and bills.

For each bill and coin you have, match it to one of the money icons at the bottom of the screen and click the icon. Its picture will pop up in the wallet area above.

The user can match each bill or coin they have to one of the money icons at the bottom of the screen. When they click on a money icon, it will pop up as a picture in the wallet area, and the wallet total will be updated.



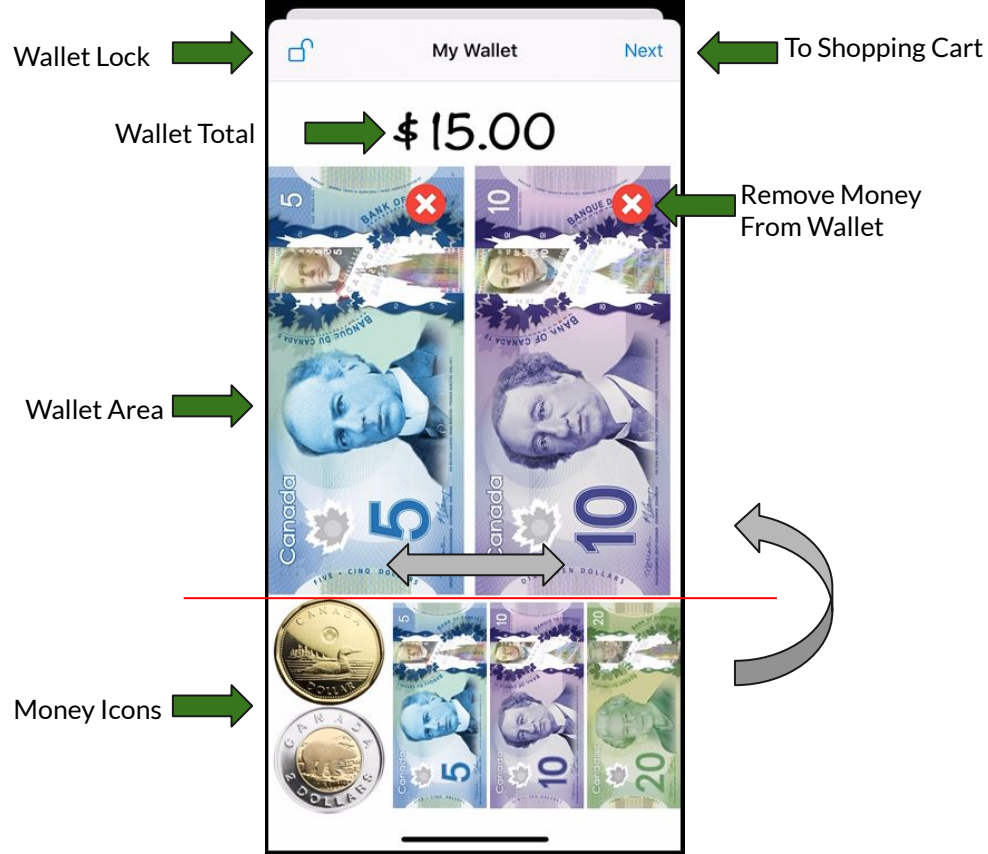
# Your Wallet

You can scroll side to side to view your coins and bills in the wallet area.

If you accidentally add a coin or bill you do not have, click the red “x” icon at the corner of the picture in the wallet area.

If you need to lock your wallet, preventing any future changes to its contents, you can press the wallet lock icon in the top left corner.

When you’ve added all the bills from your wallet, click “next” in the top right corner to being shopping.



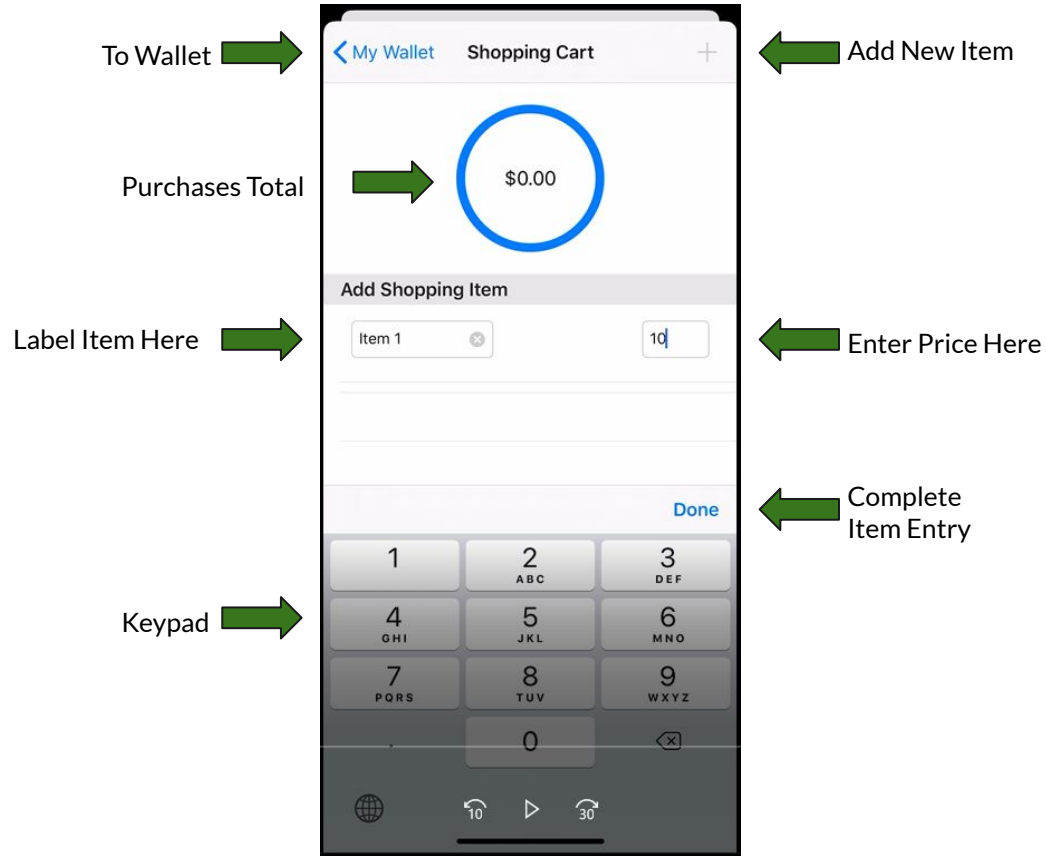
# Shopping Cart

When you begin shopping, you must look at the price for every item in you put in your cart. Enter that price into your keypad, then select done.

You can add a label to each price if you want to remember it. It's *optional!*

If you want to purchase another item, click the "+" icon at the top right corner.

If you need to make changes to your wallet, go to the top left corner.



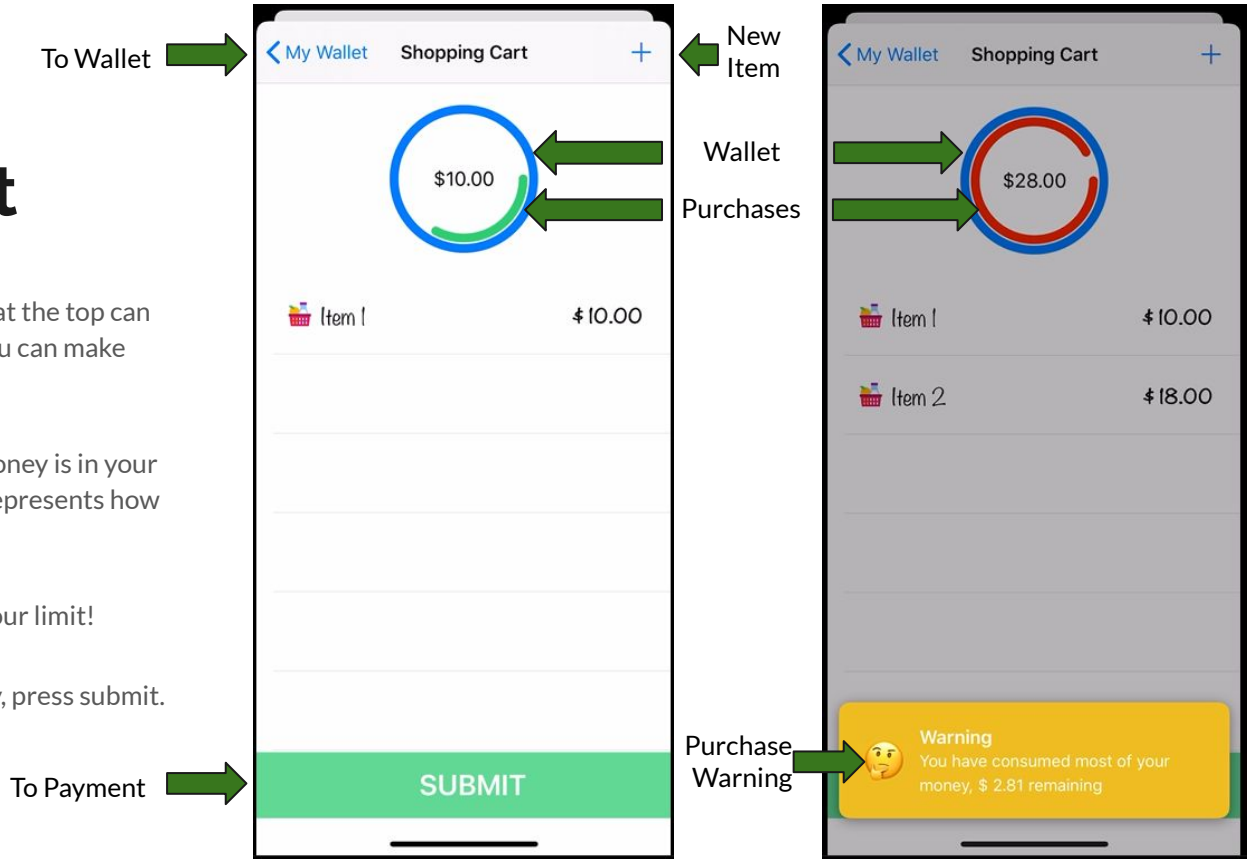
# Shopping Cart

Once you have added items, the circles at the top can show you how many more purchases you can make before you run out of money.

The blue circle represents how much money is in your wallet. The inside circle (green or red) represents how much you are spending.

iShop will warn you if you're reaching your limit!

When you are done picking items to buy, press submit.



# Payment

This screen shows the total that you must pay. IShop selects a combination of coins and bills from your wallet to ensure that you give enough money to the cashier.

If you need to make changes to your shopping cart, go to the top left corner.

The prompt at the bottom reminds you to take your change!

Beneath that prompt, you can click the red box to go back to the intro screen.

To Shopping Cart



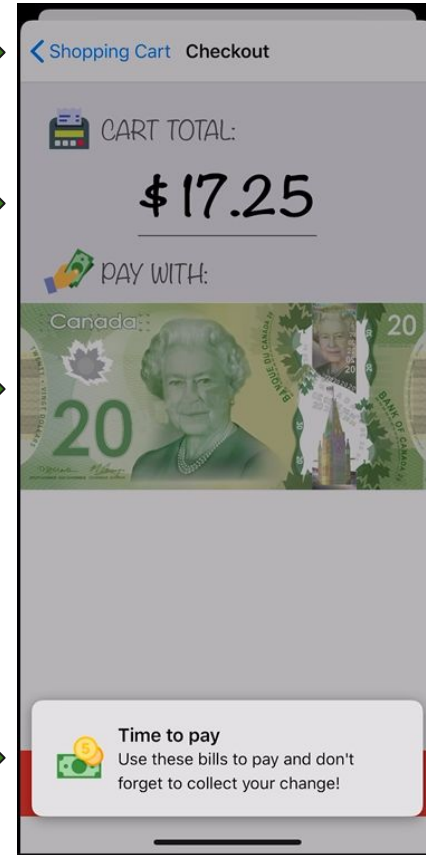
Total to Pay



Bills to Use



Social Prompt





# Administrator Settings

iShop assumes that every item is taxed at the same percentage, to err on the side of overpaying, rather than underpaying.

You are welcome to adjust the tax percentage depending on your area.

If you would like to add a tip further on top of the tax, you may toggle that on or off, and adjust the percentage to add on.

